

# la lampada a stelo

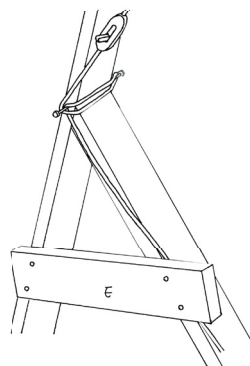
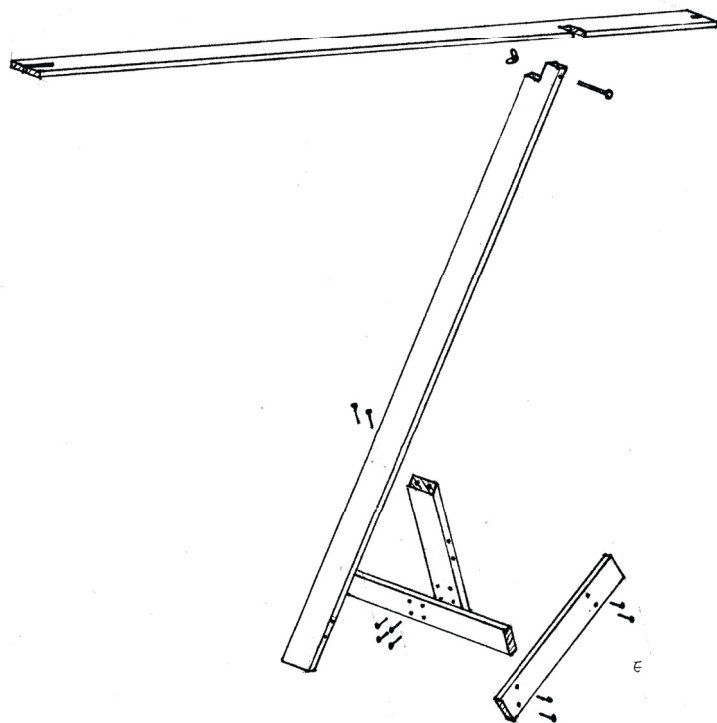
## Autoprogettazione Revisited

Easy-to-Assemble Furniture by Enzo Mari and Invited Guests is a group exhibition that traces the influence of Italian designer Enzo Mari's 1970's project for self-made furniture. Using the AA Gallery as a project space, ten artists and designers were commissioned to respond to Mari's instruction-based furniture plans with their own set of instructions. In a text accompanying the instructions, Mari writes that 'anyone, apart from factories and traders, can use the designs to make them by themselves'. Seen originally by Mari as a means for the self-fabrication of quality design objects, Autoprogettazione continues today as an expression of collaborative design thinking made topical by a recent proliferation of digital technologies.

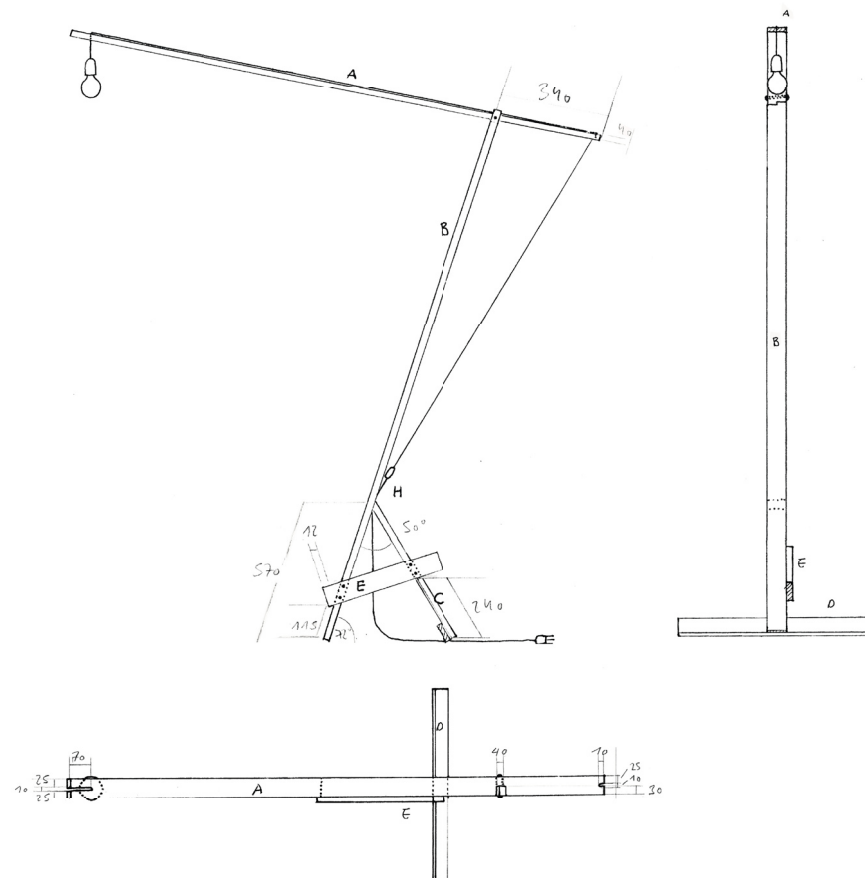
3 to 27 October 2009

AA Gallery  
Architectural Association  
[aaschool.ac.uk](http://aaschool.ac.uk)





DETAIL KNOT



	WIDTH/DEPTH	LENGTH	LAMPADA A STELO
A	60x18	1720mm	KUENG CAPUTO
B	"	1780mm	LEIMBACHSTR. 5
C	"	620mm	CH - 8041 ZÜRICH
D	"	620mm	
E	"	480mm	SCALE 1:6
F	LIGHT BULB		
G	LAMP HOLDER WITH 4,3m CABLE		
H	SWITCH AFTER 2,7m (AFTER LIGHT BULB)		